

Imagine.

 Roland®

**DVE**  
Digital Value Engineering

# ***VersaCAMM***

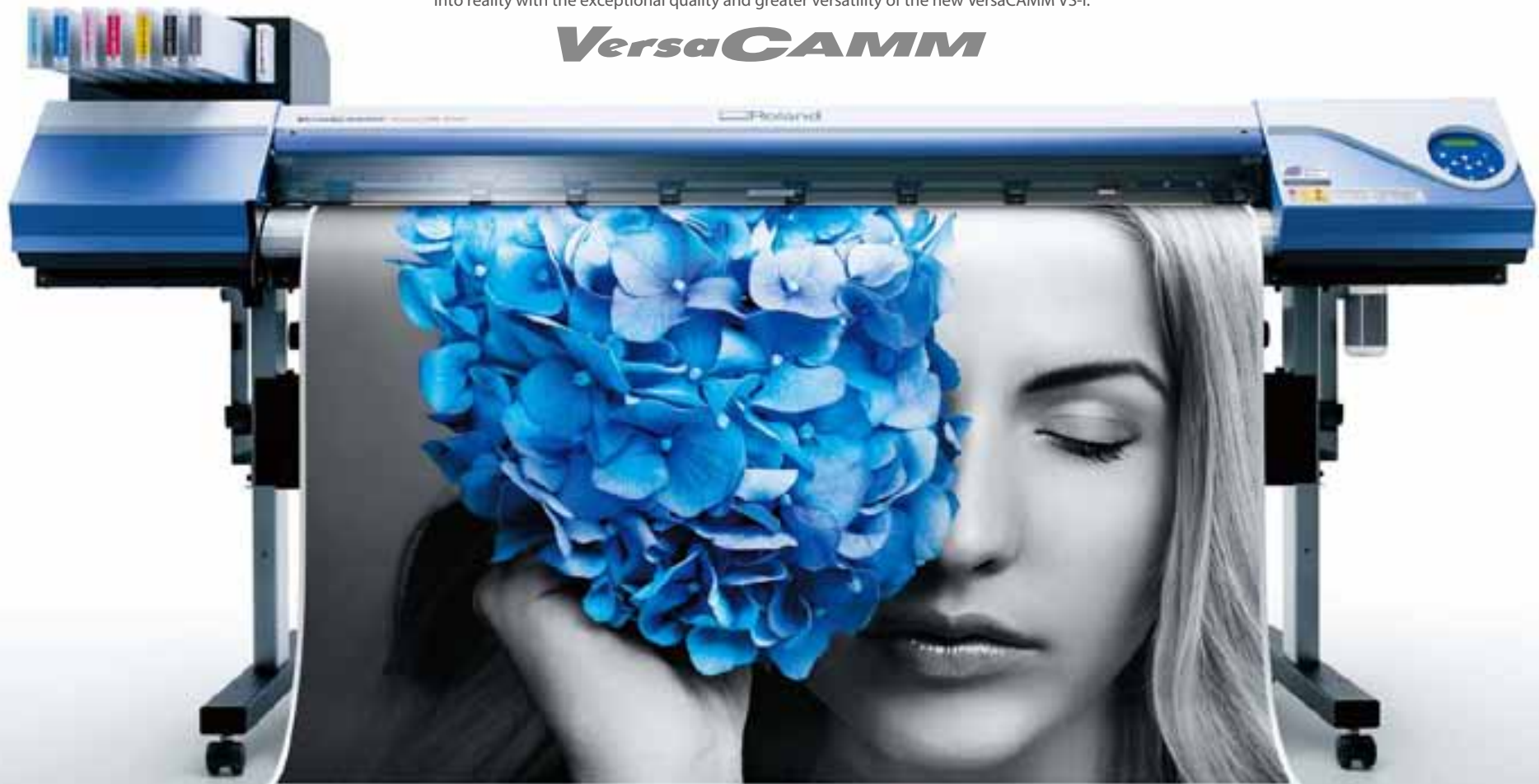
*Print & Cut* **VS-640i / VS-540i / VS-300i**

# BEYOND IMAGINATION

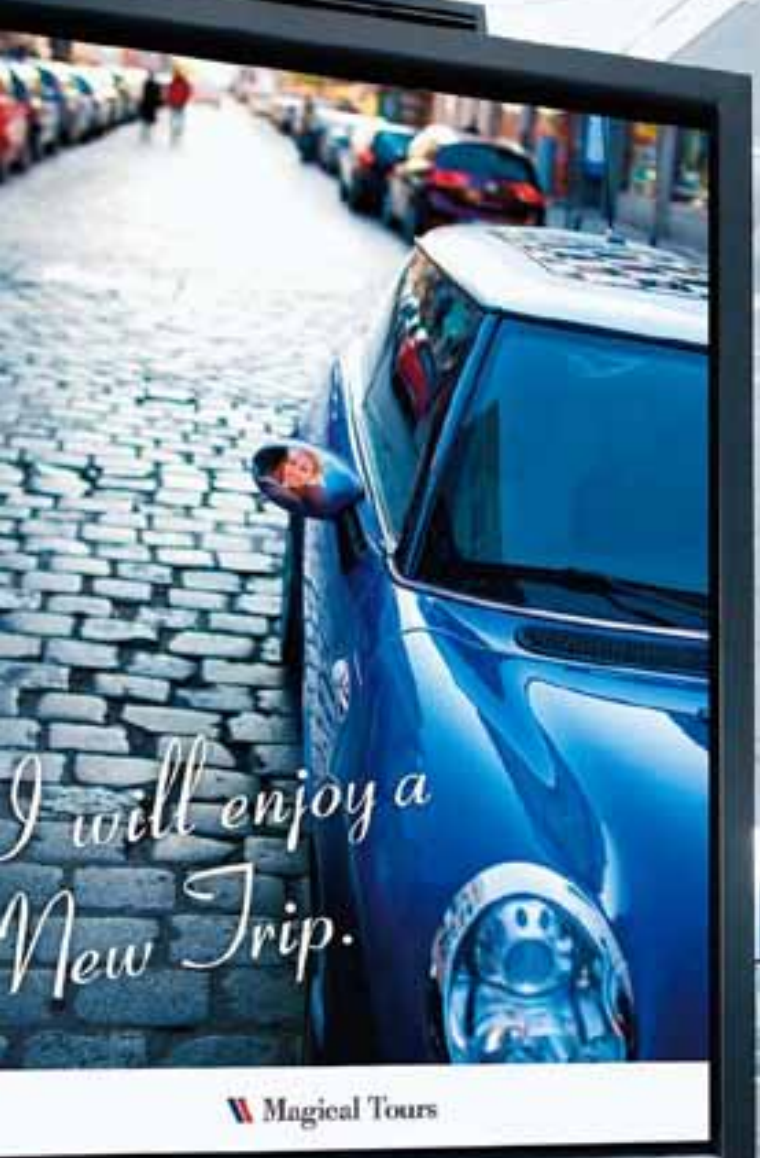
Versatile performance that powers your imagination

VersaCAMM, the most popular wide-format inkjet printer for sign and durable graphics users around the world, has been reborn with superior performance to meet the needs of sign and graphics professionals. The versatile VersaCAMM VS-i series features the new high-density EC  $\text{O-SOL MAX2}$  ink available in CMYKLcLm, white, metallic and Light Black, a range of usability enhancements to improve ease of use, world leading integrated contour cutting, and of course, exceptional print quality rivaling that of a high-end machine. Go beyond your imagination and turn your ideas into reality with the exceptional quality and greater versatility of the new VersaCAMM VS-i.

**VersaC*C*AMM**









# QUALITY

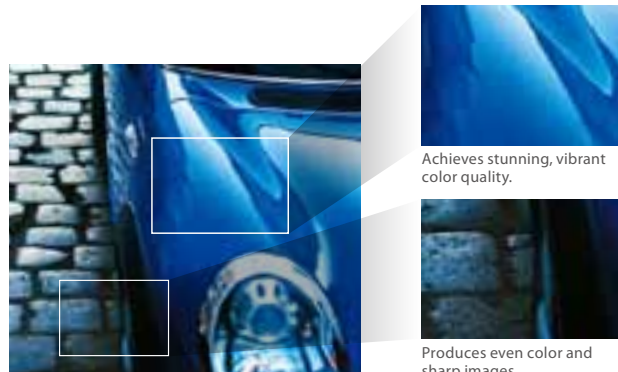
## Exceptional print quality befitting a high-end machine

The VersaCAMM VS-i series delivers the level of print quality sought by sign and graphics professionals. It is equipped with the latest high performance print head, which fires droplets of seven different sizes to optimize image quality for the specific media and print resolutions selected. The VS-i achieves incredibly high resolution rivaling that of high-end machines thanks to precise head control, which maximizes the potential of the print head and ink. Enlarge your print business and make more profit with vibrant, colorful and detailed results from the VersaCAMM VS-i series.



## ECO-SOL MAX 2 delivers incredibly sharp image quality

ECO-SOL MAX2 is a new generation of Roland's award-winning eco-solvent ink, featuring outstanding long-term outdoor durability, scratch and chemical resistance, broad media support and a wide color gamut – all with no nickel compounds. ECO-SOL MAX2 is engineered for stable, consistent output, and produces vibrant colors with sharp images and text. These enhancements bring out every detail for the highest print quality.

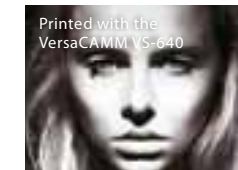


# MONOCHROME

## Monochrome printing with excellent gray balance



VersaCAMM VS-i supports the new light black (Lk) ECO-SOL MAX2 ink, providing highly accurate colors and seamless gradations. With light black, you can achieve a neutral gray for smooth gray scale gradations and precise photographic images, or produce natural, smooth reproduction of skin tones containing light and medium hues. Light black also assists with accurate color reproduction for corporate branding material, such as clothing or cosmetics promotions.



Printed with the VersaCAMM VS-640



Printed with the VersaCAMM VS-640i

Accurate gray balance and remarkably smooth skin tones

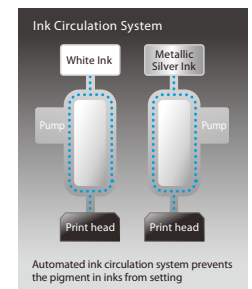
# WHITE & METALLIC

## White and metallic printing produces profitable new applications



The standard mode of the new VS-i series can match the image quality of its predecessor's high quality mode\*, achieving approximately 1.5 times faster production speed for printing with white. Vibrant full color prints are possible not only with transparent film but also for deep color elements, thanks to the increased density of the new white ink. In standard mode, the new metallic ink also makes it possible for the VS-i to reproduce the image density of the previous models' high quality mode\*, while delivering approximately 2 times faster production speed.

\* VersaCAMM VS -640/540/300







Specifications				
Model	VS-640i	VS-540i	VS-300i	
Printing technology	Piezoelectric inkjet			
Media	Width	210 to 1,625 mm (8.3 to 64 in.)	210 to 1,371 mm (8.3 to 54 in.)	
	Thickness	Maximum 1.0 mm (39 mil) with liner, for printing	Maximum 0.4 mm (16 mil) with liner and 0.22 mm (9 mil) without liner, for cutting	
	Roll outer diameter	Maximum 210 mm (8.3 in.)		
	Roll weight	Max. 40 kg (88 lbs)	Max. 30 kg (66 lbs)	Max. 25 kg (55 lbs)
	Core diameter <sup>*1</sup>	76.2 mm (3 in.) or 50.8 mm (2 in.)		
Printing/cutting width <sup>*2</sup>	Max. 1,600 mm (63 in.)	Max. 1,346 mm (53 in.)	Max. 736 mm (29 in.)	
Ink cartridges	Types	440-cc cartridge (cyan, magenta, yellow, black, light cyan, light magenta, and light black) 220-cc cartridge (metallic silver and white)		
	Colors	Eight colors (cyan, magenta, yellow, black, light cyan, light magenta, light black, and white) or, Eight colors (cyan, magenta, yellow, black, light cyan, light magenta, light black, and metallic silver) or, Eight colors (cyan, magenta, yellow, black, light cyan, light magenta, metallic silver, and white) or, Seven colors (cyan, magenta, yellow, black, light cyan, light magenta, and light black) or, Four colors (cyan, magenta, yellow, and black)		
Printing resolution (dots per inch)	Maximum 1,440 dpi			
Cutting speed	10 to 300 mm/s			
Blade force	30 to 300 gf			
Cutting blade	Type: Roland CAMM-1 series compatible	Blade offset: 0.000 to 1.500 mm (0.000 to 0.059 in)		
Software resolution (when cutting)	0.025 mm/step			
Distance accuracy (when printing) <sup>*3*4</sup>	Error of less than ±0.3% of distance traveled, or ±0.3 mm, whichever is greater			
Distance accuracy (when cutting) <sup>*3</sup>	Error of less than ±0.4% of distance traveled, or ±0.3 mm, whichever is greater When distance correction has been performed (when the setting for [CUTTING MENU] - [CALIBRATION] has been made): Error of less than ±0.2% of distance traveled, or ±0.1 mm, whichever is greater			
Repeatability (when cutting) <sup>*3*5</sup>	±0.1 mm or less			
Alignment accuracy for printing and cutting <sup>*3*6</sup>	±0.5 mm or less			
Alignment accuracy for printing and cutting when reloading media <sup>*3*7</sup>	Error of less than ±0.5% of distance traveled, or ±3 mm, whichever is greater			
Media heating system <sup>*8</sup>	Print heater	Setting range for the preset temperature: 30 to 45°C (86 to 112°F)		
	Dryer	Setting range for the preset temperature: 30 to 50°C (86 to 122°F)		
Connectivity	Ethernet (10BASE-T/100BASE-TX, automatic switching)			
Power-saving function	Automatic sleep feature			
Power requirements	AC 100 to 120 V ±10%, 7.8 A, 50/60 Hz or AC 220 to 240 V ±10%, 4.0 A, 50/60 Hz	AC 100 to 120 V ±10%, 7.5 A, 50/60 Hz or AC 220 to 240 V ±10%, 3.8 A, 50/60 Hz	AC 100 to 120 V ±10%, 5.1 A, 50/60 Hz or AC 220 to 240 V ±10%, 2.6 A, 50/60 Hz	
Power	During operation	Approx. 1,044 W	Approx. 995 W	
	Sleep mode	Approx. 14.5 W	Approx. 15.1 W	Approx. 14.4 W
Acoustic noise level	During operation: 69 dB (A) or less	During standby: 43 dB (A) or less		
Dimensions (with stand)	2,575 (W) x 795 (D) x 1,270 (H) mm (101.4 (W) x 31.1 (D) x 50 (H) in.)	2,315 (W) x 795 (D) x 1,270 (H) mm (91.1 (W) x 31.1 (D) x 50 (H) in.)	1,700 (W) x 795 (D) x 1,270 (H) mm (66.9 (W) x 31.1 (D) x 50 (H) in.)	
Weight (with stand)	140 kg (309 lbs)	130 kg (287 lbs)	100 kg (220 lbs)	
Environmental	Power on	Temperature: 15 to 32°C (59 to 90°F) (20°C [68°F] or more recommended), humidity: 35 to 80%RH (non-condensing)		
	Power off	Temperature: 5 to 40°C (41 to 104°F), humidity: 20 to 80%RH (non-condensing)		
Included items	Exclusive stands, power cord, blade, blade holder, media clamps, media holder, replacement blade for separating knife, User's Manual, etc.			

Options		
Model		Description
ECO-SOL MAX2 Ink	ESL4-4CY	Cyan, 440cc
	ESL4-4MG	Magenta, 440cc
	ESL4-4YE	Yellow, 440cc
	ESL4-4BK	Black, 440cc
	ESL4-4LC	Light cyan, 440cc
	ESL4-4LM	Light magenta, 440cc
	ESL4-4LK	Light black, 440cc
	ESL4-MT	Metallic silver, 220cc
	ESL4-WH	White, 220cc
Cleaning cartridge	ESL4-CL	Cleaning liquid, 1pc.
Blades	ZEC-U5025	For thick, reflective and fluorescent vinyl, as well as sign vinyl in general, 5pcs.
	ZEC-U5022	For sign vinyl in general, 2pcs.
Blade Holders	XD-CH2	Blade holder with blade extension adjuster, made of aluminum
	XD-CH3	Blade holder with blade extension adjuster, made of resin

Roland VersaWorks System Requirements	
Operating system	Windows <sup>*</sup> 7 Professional or Ultimate (32/64-bit); Windows Vista <sup>*</sup> Business/Ultimate (32/64-bit); Windows <sup>*</sup> XP Professional Service Pack 2 or later (32/64-bit)
CPU	Core™ 2 Duo, 2.0 GHz or faster recommended
RAM	2 GB or more recommended
Video card and monitor	A resolution of 1,280 x 1,024 or more recommended
Free hard-disk space	40 GB or more recommended
Hard-disk file system	NTFS format
Optical drive	DVD-ROM drive

<sup>\*</sup>Roland VersaWorks<sup>™</sup> is a 32-bit application, which runs on 64-bit Windows<sup>™</sup> with WoW64 (Windows 32-bit on Windows 64-bit).

<sup>\*1</sup> Note: The media holder of this machine is exclusive use for the media of paper tube (core) inner diameter 3 inches. To use 2 inches media, the optional media flanges are required. <sup>\*2</sup> The length of printing or cutting is subject to the limitations of the program. <sup>\*3</sup> Media type: Media specified by Roland DG Corp. <sup>\*4</sup> Temperature: 25°C (77°F), humidity: 50% <sup>\*5</sup> Roll media must be loaded correctly. <sup>\*6</sup> Applicable when all pinch rollers available to the media width are used. <sup>\*7</sup> Side margins: 25 mm or more for both the left and right margins <sup>\*8</sup> Front margin: 35 mm or more <sup>\*9</sup> Excluding expansion/contraction of the media <sup>\*10</sup> Not assured when the print heater or dryer is used. <sup>\*11</sup> All correction or adjustment function of this machine has been made properly. <sup>\*12</sup> With Roland PET film, print travel: 1 m <sup>\*13</sup> [PREFEED] menu item must be set to "ENABLE." Range for assured repetition accuracy [64-inch model] <sup>\*14</sup> For media with a width exceeding 610 mm: Length 4,000 mm <sup>\*15</sup> For media with a width of 610 mm or less: Length 8,000 mm [54-inch model] <sup>\*16</sup> For media with a width exceeding 610 mm: Length 4,000 mm <sup>\*17</sup> For media with a width of 610 mm or less: Length 8,000 mm [30-inch model] <sup>\*18</sup> Length 3,000 mm <sup>\*19</sup> Provided that media length is under 3,000 mm <sup>\*20</sup> Excludes the effects of slanted movement and of expansion and contraction of the media. <sup>\*21</sup> Data size [64-inch model] 1,000 mm in the media-feed direction, 1,600 mm in the carriage-movement direction [54-inch model] 1,000 mm in the media-feed direction, 1,346 mm in the carriage-movement direction [30-inch model] 1,000 mm in the media-feed direction, 736 mm in the carriage-movement direction <sup>\*22</sup> No lamination <sup>\*23</sup> Automatic detection of crop marks at 4 points when media is reloaded. <sup>\*24</sup> During cutting, [PREFEED] menu item must be set to "ENABLE." <sup>\*25</sup> Excluding possible shift caused by expansion/contraction of the media and/or by reloading the media. <sup>\*26</sup> Warm-up is required after power up. This may require 5 to 20 minutes, depending on the operating environment. <sup>\*27</sup> Depending on the ambient temperature and media width, the preset temperature may fail to be reached.


Option
Automated take-up system

TU2-64 [For VS-640 i]
TU2-54 [For VS-540 i]
TU2-30 [For VS-300 i] * Rolls up to 30kg (66 lbs.)
Heater and blower

OndS 640A / B [For VS-640 i] <sup>*1</sup> It is recommended to use heater and blower especially for printing with white and metallic.
OndS 540A / B [For VS-540 i]
OndS 300A / B [For VS-300 i]
Power requirements
OndS ***A : AC 100 to 115 V, 6 A, 50/60 Hz
OndS ***B : AC 200 to 240 V, 3 A, 50/60 Hz

**About Metallic Silver and White Inks**  
Due to the nature of white and silver inks, the pigment in these inks will settle in the cartridge and ink flow system, requiring you to shake the cartridge before each use. Outdoor durability is three years for CMYK inks, one year for white ink, and one to three years for metallic silver ink, depending on the media used. Roland strongly recommends lamination for both indoor and outdoor graphics to ensure the quality of metallic inks.

Roland DG products that feature this environmental label meet the company's criteria for environmental consciousness, a set of standards based on ISO 14021 self-declaration type II. For more information, please visit [www.rolanddg.com](http://www.rolanddg.com).



Roland reserves the right to make changes in specifications, materials or accessories without notice. Your actual output may vary. For optimum output quality, periodic maintenance to critical components may be required. Please contact your Roland dealer for details. No guarantee or warranty is implied other than expressly stated. Roland shall not be liable for any incidental or consequential damages, whether foreseeable or not, caused by defects in such products. Adobe, PostScript, PostScript 3 and the PostScript logo are trademarks of Adobe Systems Incorporated. PANTONE<sup>™</sup> is the property of Pantone LLC. All other trademarks are the property of their respective owners. Reproduction or use of copyrighted material is governed by local, national, and international laws. Customers are responsible for observing all applicable laws and are liable for any infringement. Roland DG Corp. has licensed the MMP technology from the TPL Group.